

ECONOMICAL MODE BY STABILIZING THE FLUID SUPPLY PRESSURE AND ELIMINATING ENERGY LOSSES IN PUMPING UNITS

Islom Khafizov

Candidate of Physical and Mathematical Sciences, Associate Professor,
Bukhara Engineering-Technological Institute, Bukhara, Uzbekistan.

Islomikhafizov@umail.uz

Komil Gafforov

Assistant, independent researcher, Bukhara Engineering-Technological
Institute, Bukhara, Uzbekistan. komilgafforov@mail.ru

Sukhrob Atoyev

Master. Bukhara Engineering-Technological Institute,
Bukhara, Uzbekistan.

Mehrangiz Jòrakulova

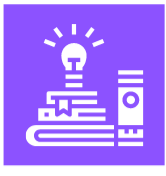
Master. Bukhara Engineering-Technological Institute, Bukhara,
Uzbekistan.

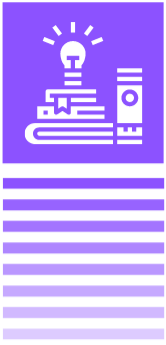
ABSTRACT

This article addresses the issues of the economical mode provided by pressure stabilization in the fluid supply system of pumping units. It is shown that the main control parameter in systems stabilizing the pressure in the network is the pressure at the dictating point. It is proved that the stabilization of the pressure at the dictating point provides the necessary minimum pressure in the network and reduces the energy consumption spent by the pumping station for water supply.

Keywords: Pressure, automatic control system, pressure sensor, proportional-integral controller, pump unit, pump speed.

For a significant group of pumping units, the economical mode is ensured by stabilization of pressure (pressure) in the fluid supply system. Such installations include pumping stations of the second and third elevations of industrial and urban water pipelines, pumping stations of pumping, stations of closed irrigation systems and the like. The need to stabilize the





pressure in the network of these stations is due to the variable nature of the water consumption regime. The probabilistic nature of water consumption requires continuous changes in the operating mode of the pump unit. Changes must be made in such a way that the required values of technological parameters (feeds, heads) in the system as a whole are maintained and at the same time the minimum possible energy consumption of the pump unit is ensured.

This problem is solved by an automatic control system (ACS) of the pump installation, stabilizing the pressure in the network at a given value. It is almost impossible to stabilize the pressure at all points of a complex branched network. Therefore, we can talk about stabilizing the pressure at some individual points in the network, called dictators. As dictatorships, points are chosen where the provision of normal pressure at which ensures the maintenance of the same or higher heads at other points of the network. As a dictating point, a section of the water supply network located at the highest geodetic elevations and the most distant from the pump station in the hydraulic ratio is selected, i.e., the section to which the pressure losses are of the greatest importance. The location of the dictation points is determined by hydraulic calculation of the network or empirically, as well as by the results of long-term operational observations. With a significant redistribution of water flows in the network, the dictating point can change its location. When the network is working in conjunction with pumping stations that are close to the consumers, for example, pumping stations, the dictating point can be located on the pressure head of the station. The main control parameter in systems that stabilize the pressure in the network is the pressure at the dictating point (s). Stabilization of the pressure at the dictating point provides the necessary minimum pressure in the network and reduces the energy consumption spent by the pumping station for water supply[1].

Below we consider the process of stabilizing the pressure at a dictating point using the example of a simple unbranched water supply network. Suppose that one pump is operating at the station (Fig.1). For normal water supply to consumers at dictating point A, the so-called free head H_{fr} must be maintained. Point A is located at Z_2 above the water level in the tank. Losses of pressure in the conduit depend on the flow rate to the

second degree. Therefore, in order to raise the water from the mark Z_1 to the mark Z_2 , to overcome the hydraulic resistance and provide a given free head, it is necessary to develop the water head

$$H = (Z_2 - Z_1) + H_{fr} + SQ^2. \quad (1)$$

Graphically, the dependence of the required pressure at the outlet of the pumping station on the flow rate is shown by curve 1 in Fig. 2. If this dependence is observed, a stable required pressure H_{fr} is maintained at the dictating point.

However, this pressure during operation of the pump with a constant speed is only supported in maximum flow mode. The rest of the time, when the pump operates at a low flow rate, for example at 7 h, the system operates at a high pressure. In fig. 2 shows how the pressure changes at different times of the day depending on the change in the water supply of the pump unit.

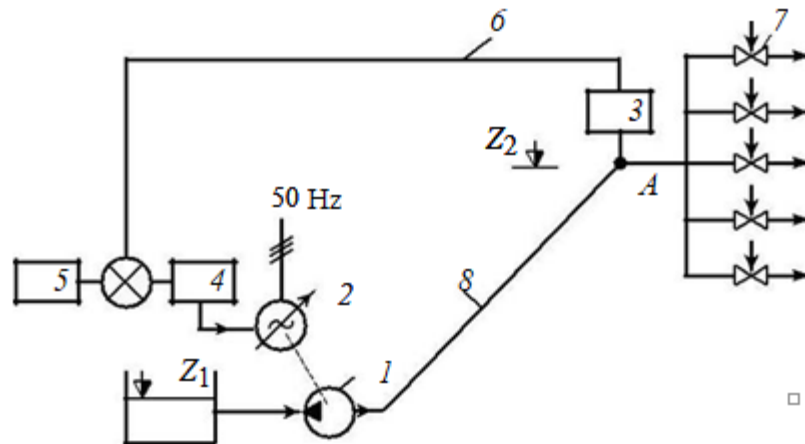


Fig.1. Schematic diagram of the stabilization of pressure in the dictating point A of the water supply network:

1 - centrifugal pump; 2 - adjustable electric drive; 3 - pressure sensor; 4 - PI controller; 5 - master device; 6 - communication channel; 7 - water-folding devices; 8 - water conduit.

In order for the pump installation to work without exceeding the pressure for any water consumption, it is necessary to equip it with an appropriate automated control system (ACS), which includes adjustable electric drive. Such a system consists of a pump unit equipped with an adjustable electric drive, a pressure sensor, a proportional-integral controller (PI controller), a master device and communication channels between the converter and

the controller (see. Fig.1). The master device determines the required pressure value at the dictating point of the water supply network. The signals from the pressure sensor installed in the dictating point of the network, and from the master device are fed to the PI controller, where they are compared with each other, processed accordingly and then transmitted to the control system of the controlled electric drive of the pump unit.

If the pressure at the dictating point is higher than the set value, then a command is sent to the adjustable electric drive to reduce the speed of the pump motor, and vice versa. Changing the speed of the pump stops when the pressure at the dictating point matches the set value.

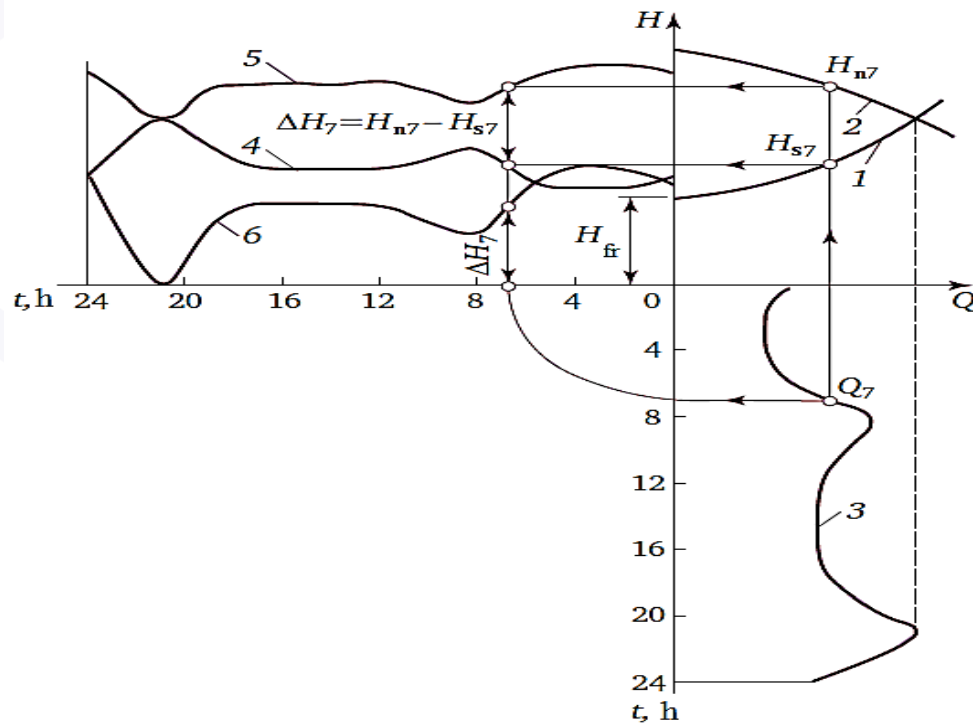
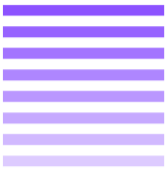
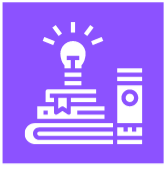


Fig. 3.2. Diagrams of daily changes in pressure developed by the pump unit:

1 - characteristic of the pipeline; 2 - pressure characteristic of the pump; 3 - is a graph of water consumption; 4 - the required pressure at the outlet of the pumping station; 5 - the actual pressure at the outlet of the pumping station; 6 - changes in time overpressure.

The regulatory process is as follows. At some point in time t_1 , the pump operates at a speed of n_1 , flow Q_1 and pressure H_1 (Fig. 3). This mode corresponds to a pressure loss h_1 . Then the pressure at the dictating point



A (see Fig.3) is equal to $H_A = H_1 - h_1$. We assume that this pressure at the beginning of the process corresponds to the set pressure value at the dictating point H_{set} [2].

Suppose that at the next time t_2 , the consumer, closing one of the water taps, reduces the water withdrawal from the system. A reduced pump flow Q_2 corresponds to an increased head H_2 and a reduced head loss h_2 . Due to the changes in the system operating mode, the pressure at point A can be written as $H_{A2} = H_2 - h_2$. As can be seen from fig.3, H_{A2} is greater than the set pressure value $H_{set} = H_{A1}$. The signal from the pressure sensor installed at point A is compared with the signal from the master. The converted error signal is fed into the control system of the control drive. Under its influence, the speed of rotation will begin to decrease until the pressure at the dictating point assumes again the set value: $H_{set} = H_{A1}$. When the speed changes, the pressure characteristic of the pump will occupy the position corresponding to the rotation speed n_2 , and a new pressure value H_2 will be established on the pump station manifold. Thus, the operating point of the pump in the graph sequentially takes position 1, then 2, and finally 2' (see Fig. 3).

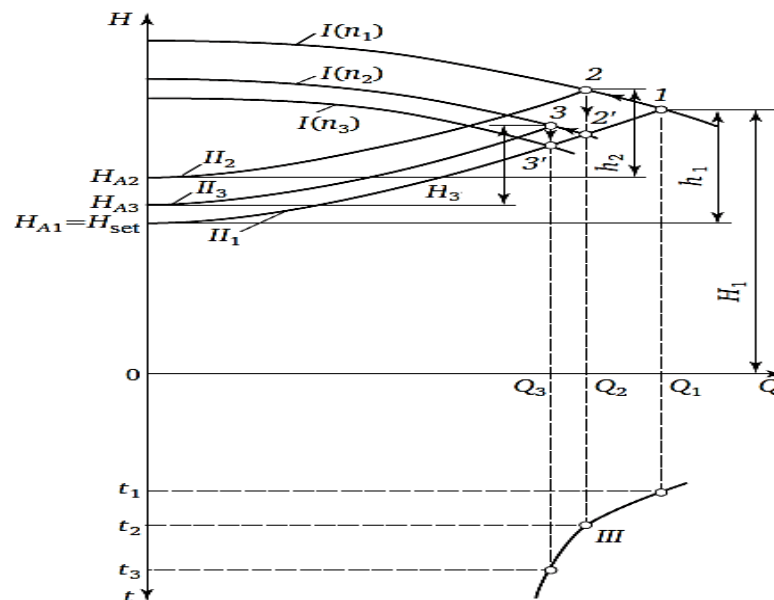
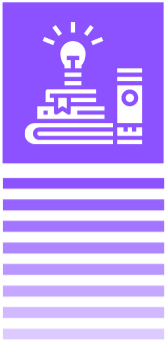


Fig.3. The process of stabilizing the pressure at the dictating point A (see Fig. 1): $I(n_1)$, $I(n_2)$, $I(n_3)$ - characteristics of the regulated pump at n_1 , n_2 , n_3 , respectively; II_1 , II_2 , II_3 - characteristics of the conduit at different times t_1 , t_2 , t_3 , respectively; III - water consumption schedule.

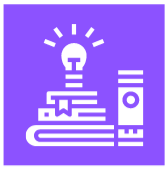


If due to the closure of another tap, a further decrease in water consumption to Q_3 occurs, the operating point of the pump will sequentially move from point $2'$ to point 3, and then $3'$. In this case, as a result of the ACS action, the pressure characteristic of the pump moves to the position corresponding to the speed of rotation n_3 .

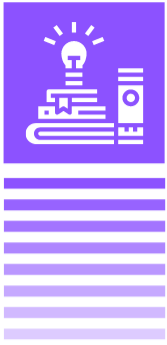
The control system is adjusted so that changes in the rotation frequency occur when there are small deviations of the values at the dictating point from the set values. For this reason, the curved triangles 1, 2, $2'$, and $2'$, 3, $3'$ on the graph are small. As a result, the operating point of the pump moves almost smoothly along the characteristic of the pipeline and, therefore, the system works without exceeding the pressure, i.e., in the economical mode. The process of stabilizing the pressure at the dictating point of the network when working with several pumping units is more complicated. If all operating units are equipped with the adjustable electric drive, the control process proceeds in the same way as described above, with the difference that the command to change the rotational speed is sent simultaneously to all operating pump units. Then the speed of the working units changes synchronously, and as a result of this, the pressure characteristics of all pumps simultaneously and uniformly change their position. Due to this, the operating parameters of adjustable pumps (supply, pressure, efficiency, etc.) change the same and, therefore, the distribution of loads between the working pump units occurs evenly. The task is more difficult to solve in those cases when both regulated and unregulated pumping units work simultaneously. In this case, the regulation process is carried out by changing the speed of the adjustable units and sequentially changing the number of working unregulated pumps.

References:

- 1) Islom Khafizov, Komil Gafforov, Muxammedov Sh., Jurakulov A Energy saving when using a variable frequency drive in pump installations, Journal of Critical Reviews, ISSN- 2394-5125 Vol 7, Issue 12, 2020, P.99-102, <http://dx.doi.org/10.31838/jcr.07.12.16>
- 2) Khafizov I.I., Komil Gafforov, Bakhodir Oblokulov, Aziz Azimov Elimination of energy losses in pumping installations by means variable frequency drive,



- International Engineering Journal For Research & Development, Vol.5, Issue 3, April 2020, E-ISSN NO:-2349-0721, Impact factor : 6.03.P.83-89, <http://iejrd.com/index.php/%20/article/view/17/5>
- 3) Khafizov I.I., Khaitov B.B. The investigation of ions implantation processes into a single-crystal GaAs(001) in order to increase the efficiency of the solar cells, MODERN SCIENCE International scientific journal №02, 2017, Founder and publisher: "Strategic Studies Institute" LLC., Moscow, 2017, P.43-46
 - 4) Khafizov I.I., Gafforov K.K. Application and prospects of variable frequency means in electric drives of pumping units, Международный научно-практический электронный журнал «МОЯ ПРОФЕССИОНАЛЬНАЯ КАРЬЕРА» (ISSN 2658-7998, договор с Elibrary №284-07/2019), 15.11.2020
 - 5) Khafizov I.I., Xafizov X.I. Modeling the introduction of ions into single-crystal gaas (001) to create p-n junctions in order to increase the efficiency of solar cells, МОЛОДЕЖНЫЙ ИССЛЕДОВАТЕЛЬСКИЙ ПОТЕНЦИАЛ, Сборник статей II Международного научно-исследовательского конкурса, состоявшегося 11 января 2021 г. в г. Петрозаводске, ст.105-111
 - 6) Muzaffarov F. F., Jo'raev M. K., Rustamov S. Sh., Gafurov M. O., Rahmatova M. U., Badriddinov R. K. "On the distribution of mds and magnetic currents in the transformer" star-double zigzag with zero conduction "" XXV International Scientific-Practical conference "EurasiaScience" PART I Research and Publishing Center "Actualnots.RF", Moscow, Russia November, 15, 2019 "https : //scholar.google.com/scholar? hl = ru & as_sdt = 0% 2C5 & q = + F.F + Muzaffarov & oq = + muz
 - 7) Juraev M.Q, Muzaffarov F.F, Rustamov S.Sh "Transparent Surface Lens Of Low-Temperature Solar Devices" The American Journal of Applied Sciences, 2 (10), 145-149. <https:// usajournalshub. com/index. php/tajas/ article/ view/1297>
 - 8) Jo'raev M.Q, Sattorov T.A., Muzaffarov F.F, Rustamov S.Sh "Transparent Surface Lens Of Low-Temperature Solar Devices" The American Journal of Applied Sciences, 2 (10), 145-149. <https://usajournalshub.com/index.php/tajas/article/view/1297/1234>
 - 9) Jo'raev M.Q, Muzaffarov F.F, Rustamov S.Sh "DC motors. reasons for failure "Vol. 10, Issue 4, April 2020 Impact Factor: SJIF 2020 = 7.13 10.5958 / 2249-



7137.2020.00139.1 p 759-765 <https://saarj.com/wp-content/uploads/ACADEMICIA-APRIL-2020-FULL-JOURNAL.pdf>

- 10) B.Shaymatov, D.A.Rakhmatov, A.F.Muxtorov, M.U.Rakhmatova "Probe of process of multiple - loop chains of parallel and consecutive joints". Rudenko International Conference on Methodological Problems in Reliability Study of Large Energy Systems, (RSES 2020). Scopus https://www.e3sconferences.org/articles/e3sconf/abs/2020/76/e3sconf_rses2020_01142/e3sconf_rses2020_01142.html
- 11) K.K.Gafforov, M.U.Rakhmatova, Sh.N.Sharipov "Three-phase corrective analysis of automatic control of pumping systems", Kazan 2020, Priority directions of innovative activity in the industry (international conference)
- 12) Leznov B.S. Energy saving and adjustable drive in pump and blower systems. M.: Energoatomizdat, 2006.
- 13) Leznov B.S. Characteristics of branched pipelines with intermediate water withdrawals // Water supply and sanitary equipment. 2007, No. 12.
- 14) Leznov B.S. Technological basis for the use of a regulated electric drive in pumping units // Water Treatment. Water treatment. Water supply. 2012, No5.
- 15) <https://journals.researchparks.org/index.php/IJIE/article/view/1607>
- 16) <https://wos.academiascience.org/index.php/wos/article/view/52>